

Oral Solid Dose

Pharmacel[®] 112

Extending possibilities for Direct Compression



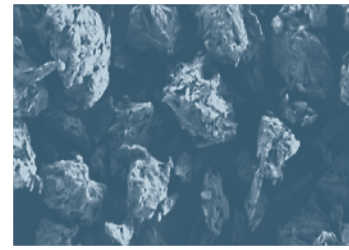
Pharmacel[®] 112 is a directly compressible microcrystalline cellulose grade with a low moisture content (LOD < 1.5% w/w), especially designed for formulating active pharmaceutical ingredients (APIs) with a high sensitivity for moisture. Pharmacel[®] 112 can be used in a wide range of oral solid dosage (OSD) forms as binder, compressing agent, diluent and/or disintegrating aid. Its low moisture content may lead to improved drug stability without compromising the performance of the final drug product. The highly protective packaging guarantees complete protection of Pharmacel[®] 112 from moisture uptake.

ASK AN EXPERT
dfepharma.com/productfinder



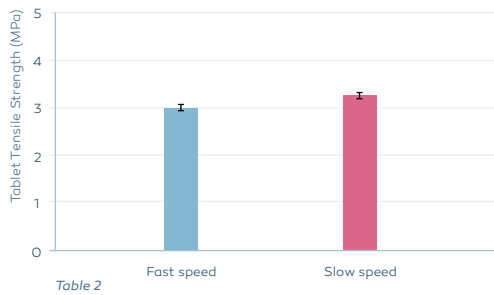
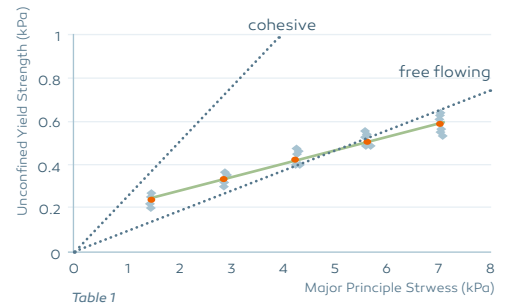
Pharmacel® 112

Benefits



Physical – Chemical Properties

Pharmacel® 112 can be characterized by its narrow bulk density specification (0.28-0.34 g/ml) and its consistent, good flow properties. Typical values for the key parameters are shown in Table 1. Uniform flow of the excipient is a prerequisite for consistent production. Pharmacel® 112 exhibits very consistent flow behavior when analysed using a ring shear cell tester.



Tabletability and Dwell Time

Excellent tabletability and low dwell time sensitivity of Pharmacel® 112 enables processing at low to moderate compaction forces. The low dwell time sensitivity of Pharmacel® 112 is demonstrated in Table 2 by the comparable tablet tensile strength at slow (50 mS) and fast (20 mS) tableting speed.

Pharmacel® and Lactose Formulations

DFE Pharma is the only global excipient company who offers both lactose and microcrystalline cellulose. The optimum tableting balance between flow and compaction can easily be achieved by combining Pharmacel® 112 with one of the direct compressible lactose grades (SuperTab®) offered by DFE Pharma achieving the perfect combination of brittle and plastic excipient behavior.

Facts

Typical product data

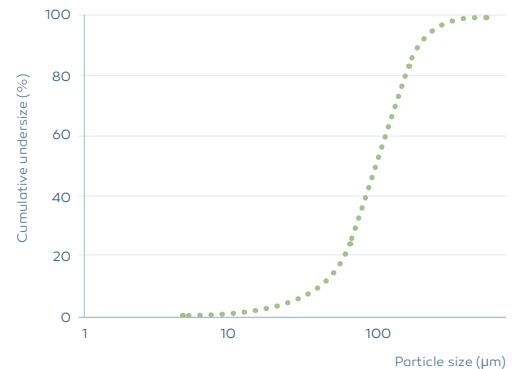
Complies with Ph. Eur., USP-NF, JP, IP
Kosher & Halal certified

Particle size distribution

Method: dry laser diffraction

Laser diffraction

x10	30 µm	Bulked density	0.33 g/ml
x50	90 µm	Tapped density	0.47 g/ml
x90	185 µm		



High protective packaging

Bag	
Capacity	25 kg
Composition	Alu+PE
Shelf life	4 years